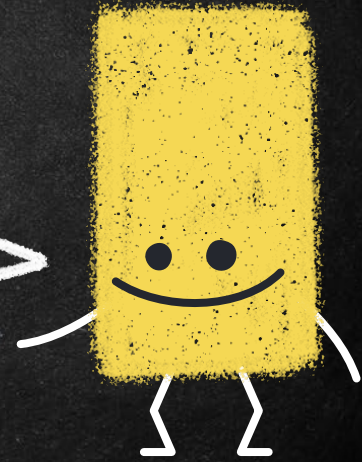
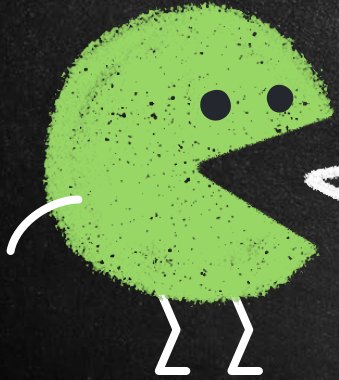


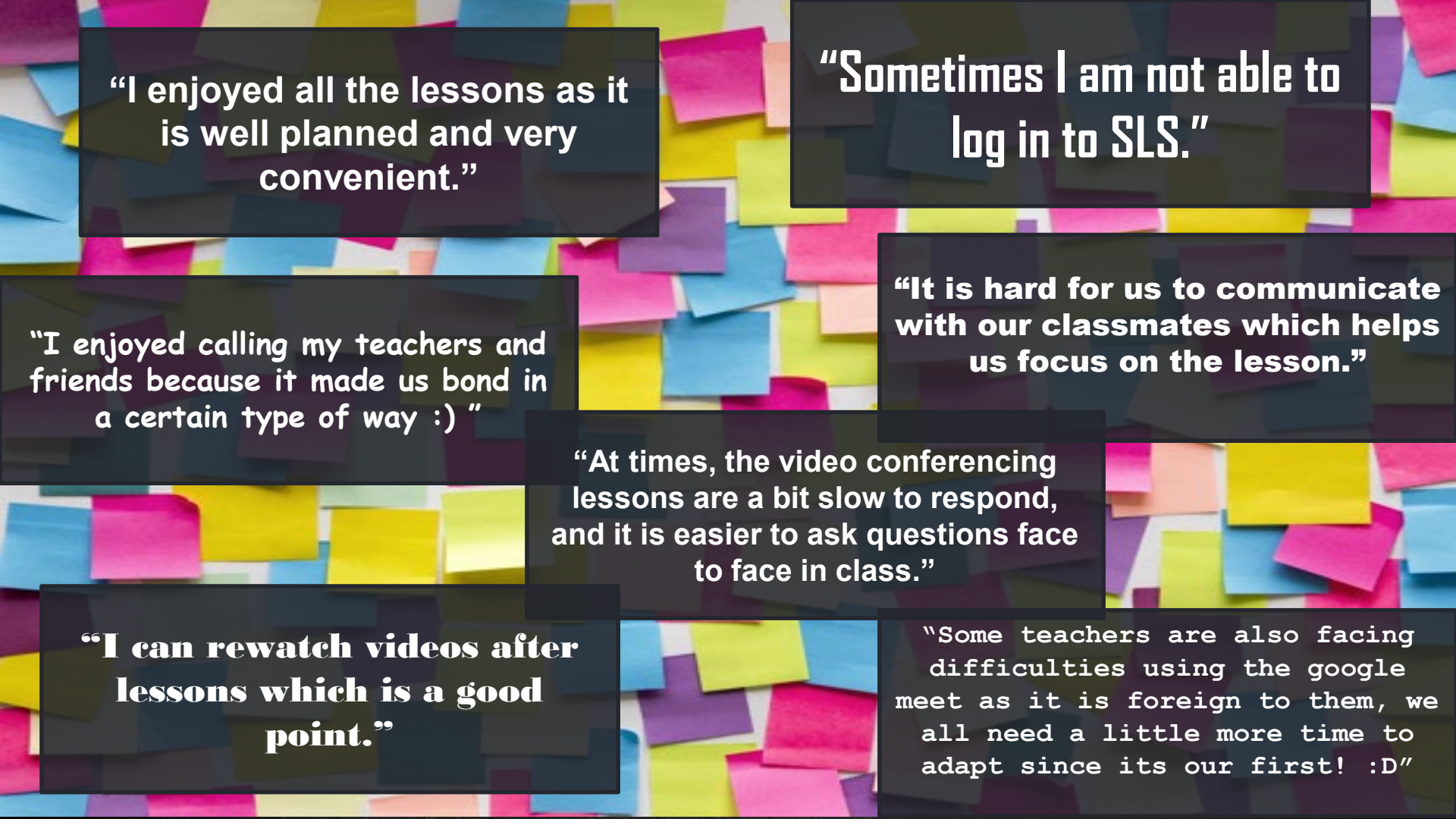
Full Home-Based Learning in BPGHS

[Info for Students]





*From last year's Home-Based Learning...
These are YOUR takeaways...*



“I enjoyed all the lessons as it is well planned and very convenient.”

“Sometimes I am not able to log in to SLS.”

“I enjoyed calling my teachers and friends because it made us bond in a certain type of way :)”

“It is hard for us to communicate with our classmates which helps us focus on the lesson.”

“At times, the video conferencing lessons are a bit slow to respond, and it is easier to ask questions face to face in class.”

“I can rewatch videos after lessons which is a good point.”

“Some teachers are also facing difficulties using the google meet as it is foreign to them, we all need a little more time to adapt since its our first! :D”

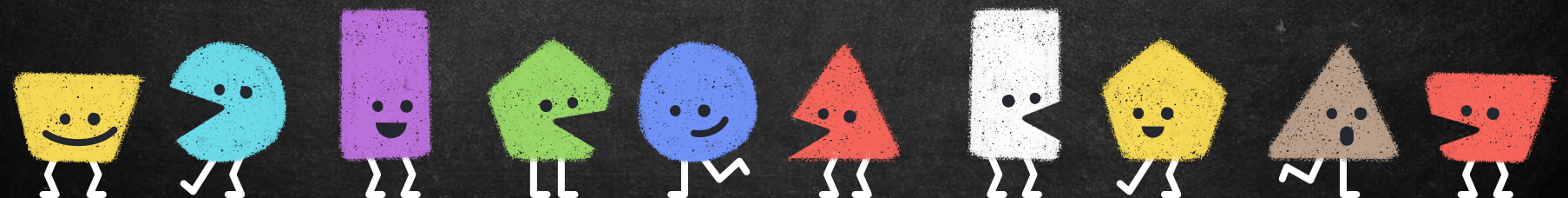


GETTING READY for HBL



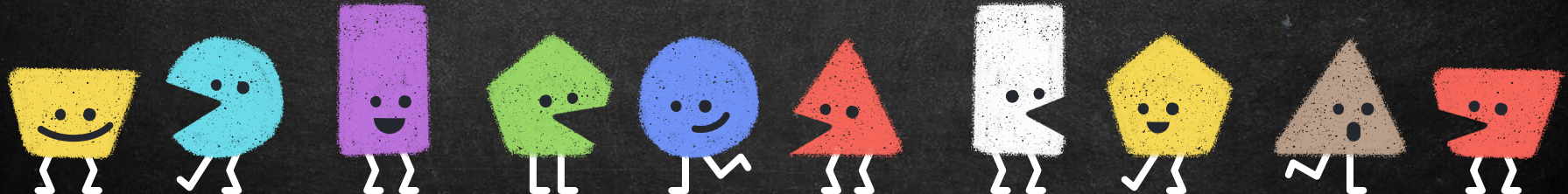


FHBL in BPGHS





1. Timetable Structure

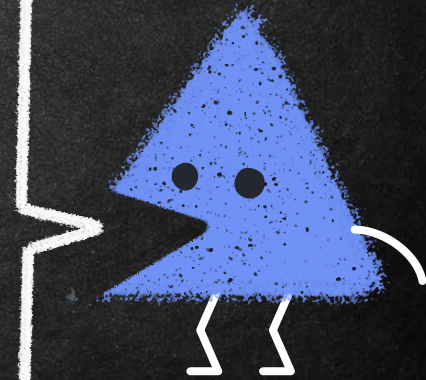


Timetable Structure

→ Follow your current timetable.

→ However, Sec 4/5 students will be released early at 1.40pm on these dates to allow students to travel to school for MTL ISP.

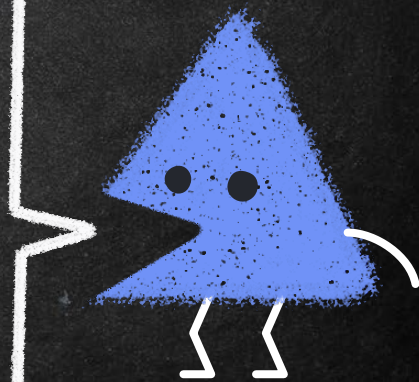
Dates	Students
24 May, Monday	4NA/5NA
25 May, Tuesday	4E
27 May, Thursday	4NA/5NA



FT Period



- Have a break!
- However, if that FT Period is a CCE lesson, the CCE lesson should still continue as per normal.
- You can find the CCE lesson in SLS.



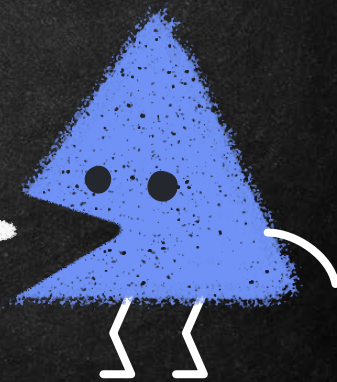
Students' Attendance + Temperature Taking

→ Each morning on FHBL, YHs will push down a new task to students via SLS.

→ Students are to *log in to SLS by 7.30am* and *check in to report their attendance and temperature.*

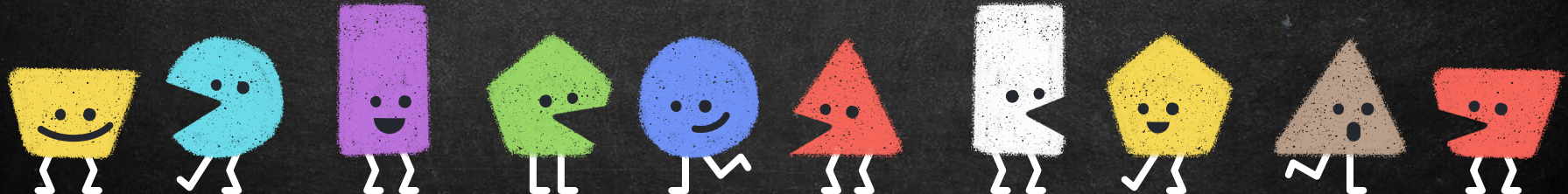
→ Lessons will start at 7.40am.

→ *If you are not feeling well, please call the GO to inform the school.*





2. Teaching & Learning of IP Subjects



Full HBL Timetable Guidelines

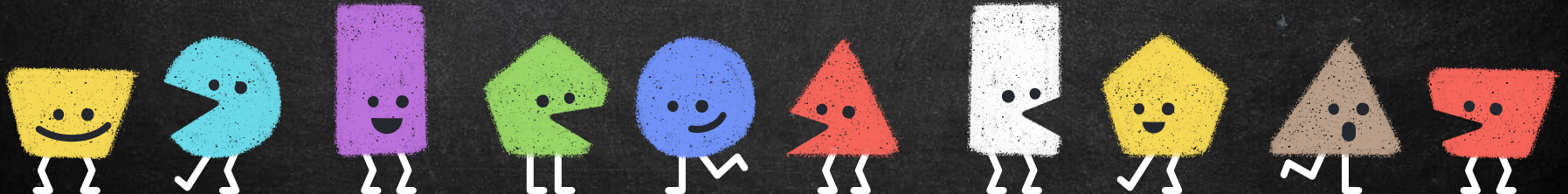
HBL Daily Lesson Guide

- School will share with students a Google spreadsheet – HBL Daily Lesson Guide where you could at one glance be able to see what lessons/ instructions they have for the day.
- It will be on BPGHS HBL Website.

Instructions for Students	
Instructions	<ol style="list-style-type: none"> 1. Please refer to your level tab for your class timetable. 2. Ensure that you are at the correct class. 3. Read the instructions for the day. 4. You will see the list of activities for each lesson. 5. Contact your subject teachers / FT / YH / AYH if you have any queries.
Eg:	
0740-0840	(H)MT (WW/GJR/KSH/MKC/NSBAJ/NCR-I/HSL)
Instructions	<ol style="list-style-type: none"> 1. Please log into SLS and finish the lesson titled "XXX" 2. Fill in the activities into the SLS that are to be completed. 3. Join the Zoom link "XXX".
Eg:	
0740-0840	SCI (LNC/NZI)
Instructions	<ol style="list-style-type: none"> 1. Please join the class on Classkick. 2. Finish the lesson on "Cells". 3. Attempt the questions for "Cells" on Classkick. 4. When completed, check the answers and do your corrections.



3. Assessment Matters



Assessment (Secondary 1 - 3)

- *WA that could not be carried out would be postponed to Term 3.*

MYE (Secondary 4 - 5)

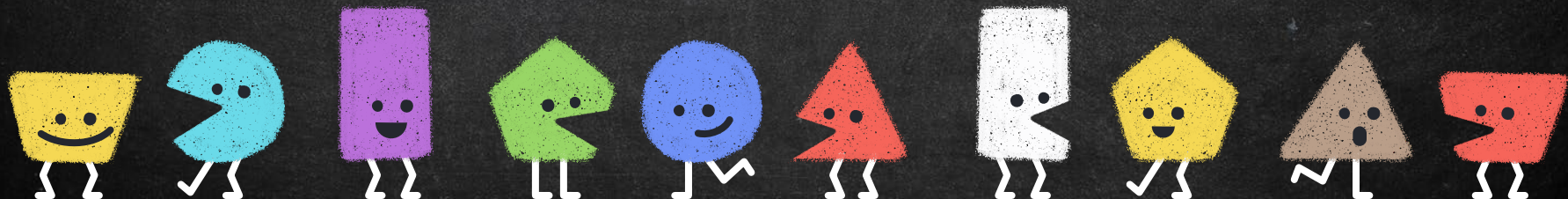
- *Going through of MYE scripts to be postponed to Term 3.*
- *Underperforming students will called back to school for consultation during Week 1 of June holidays.*

National Assessments

- *Mid-Year O-Level Mother Tongue Language Examinations will continue.* However, they will all be held in classrooms with sufficient safe distancing in place .
- Graduating students can return to school in small groups to work on their coursework submissions during the first two weeks of the June Holidays.



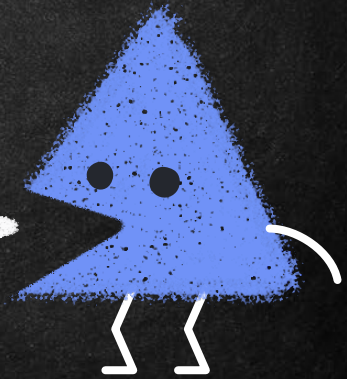
4. Student Expectations



GENERAL EXPECTATIONS

Being Ready, Focused and Responsive

- It is *your responsibility as a student* to ensure you *complete the online work and be engaged in the home based learning.*
- If there are areas you do not understand during the lessons, *your subject teacher will be available for your consultation if you are have any queries or questions.*

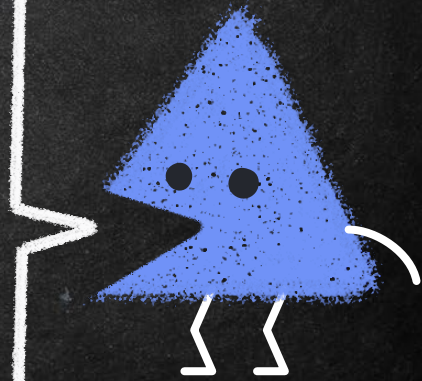


GENERAL EXPECTATIONS

Being Consistent and Responsible

→ The most important thing is for you is to be *consistent in keeping up with your learning during HBL.*

→ IF there are external factors and circumstances (e.g. slow internet connection, login issues, sharing devices) that caused you to not keep up with the pace, *be responsible and inform your subject teachers, and complete them in the afternoon.*

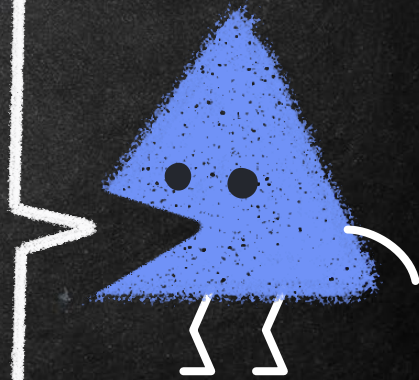


DISCIPLINARY CONSEQUENCES

→ If you are found to be missing from the online HBL session (without valid reasons), or did not complete your work assignments, parents will be informed, and you will be *required to report to school daily for HBL as a consequence*

→ If you are found to be always disrupting the video conferencing sessions and not being respectful to your teachers and peers, parents will be informed, and you will be taken to task when you return to school.

→ This is applicable to ALL sessions (including Check in, Academic Subjects or CCE lessons)

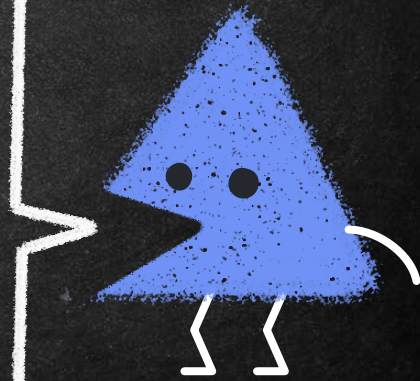


Attire

→ *It is important to be presentable* during HBL especially since there may be Zoom / Google Meet video calls.

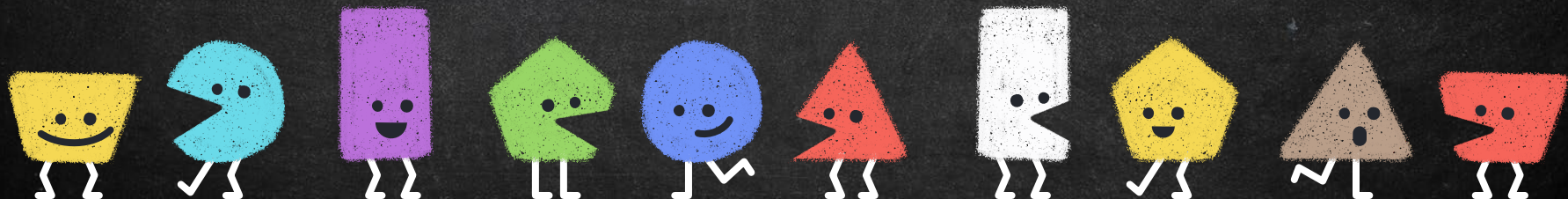
→ Please wear *either your school uniform or PE attire only* when engaging in HBL.

→ Female students with *long hair should tie it up.*





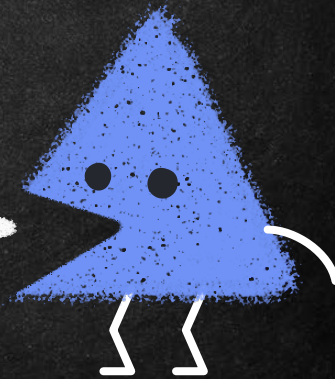
5. Support for Students



Students with NO Access to Computing Devices and/or Internet Connection

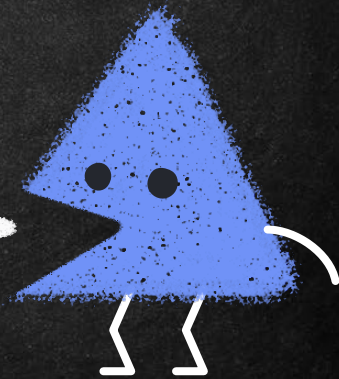
→ Students to let FTs know *immediately* if they require a laptop and/or internet dongle, but have not yet informed them.

→ The students will be linked up directly with the ICT Department for the loaning of laptops.



Students without conducive environment for HBL

→ If you feel that you do not have a conducive environment at home for HBL, *please approach your FTs if you prefer to report to school*

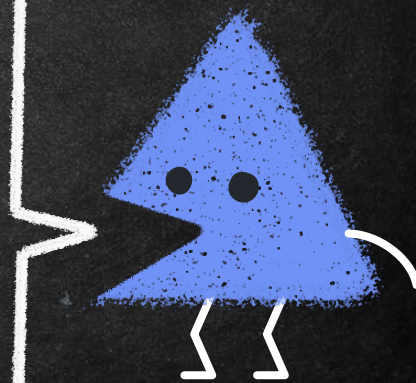


Support for Students

→ During this period of HBL, you may wish to speak to someone who could better support your well-being matters.

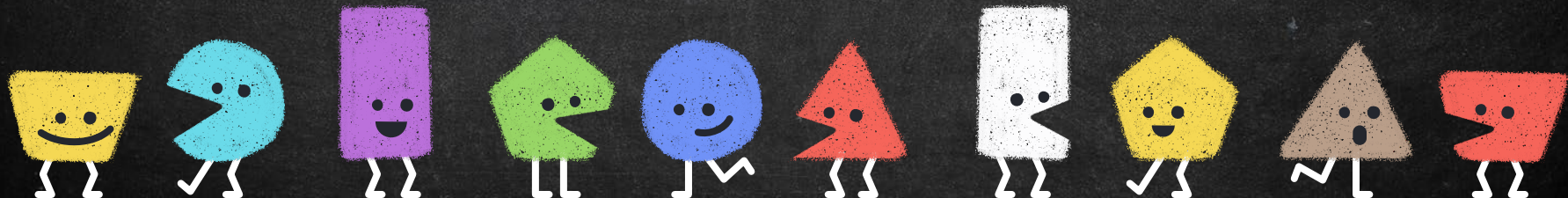
→ Other than your FTs, you may also approach the following teachers:

Sec 1	Ms Jessie Lee	Lee_min_jessie@moe.edu.sg
Sec 2	Mdm Lily Tan	Tan_lily_b@moe.edu.sg
Sec 3	Mr Leonard Ng	Ng_ding_zhong@moe.edu.sg
Sec 4/5	Mr Yeo Zhi Wen	Yeo_zhi_wen@moe.edu.sg
School Counsellor	Ms Lim Jia Qi	Lim_jia_qi@moe.edu.sg
AED (LBS)	Ms Angela Huang	Huang_liping_angela@moe.edu.sg





6. Technical Issue Support



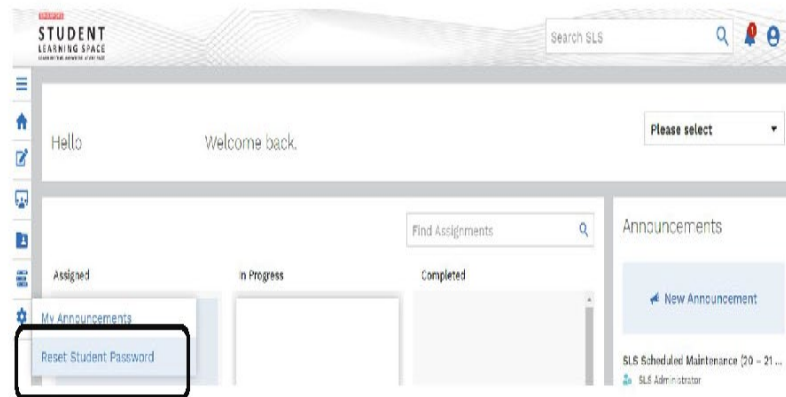
Guidelines for Student Technical Issues

Support for Students with Technical Issues

To ensure we can reach out to all students on SLS, pls help ensure the technical issues are resolved for all students' access:

- Subscribe to BPGHS School Channel on Youtube LiVE.
- Login to SLS – All FTs are now assigned as CCE subject teachers, and can help reset passwords, even if you are not the IP subject teachers
- Familiarise with BP HBL Google Site

1. Log in to SLS.
2. Click on Reset Student Password.



SLS Login Guide

Did I forget my user-id?
It should be the
first 5 letters of my name **AND**
the last 5 digits of my NRIC/BC

27

SINGAPORE

STUDENT LEARNING SPACE

LEARN ANYTIME, ANYWHERE, AT ANY PACE

Username

Password

FORGOT PASSWORD **LOGIN**

If you have difficulty resetting your password, contact your School-based Helpline (Mon-Fri, 8am-4pm).

Reset Password

Enter your username

You may contact your [School-based Helpline](#) (Mon-Fri, 8am-4pm) if you are unable to reset the password yourself.

[BACK TO LOGIN](#) **SUBMIT**

School-Based Helpline

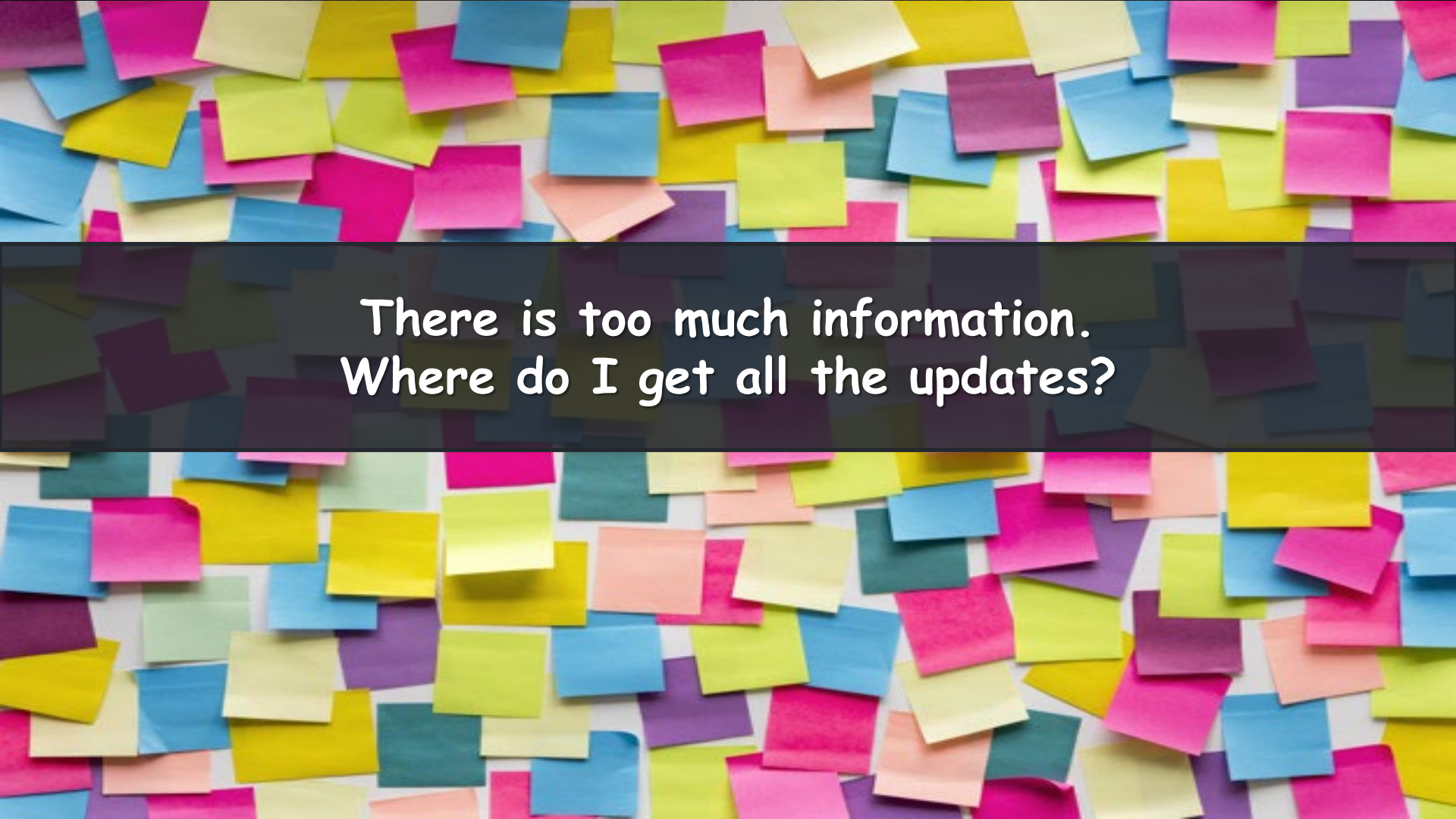
[Home](#) / [School-Based Helpline](#)

The following are details on how you can contact your school to assist in login or e-learning issues during working hours. You may use the search function to find your school quickly.

Show entries

School	Helpline
Bukit Panjang Govt. High School	Tel: 67691031 Email: Others: Form SG

- Click "Forgot Password" to reset your own password.
- Else click "School-based Helpline" to call school or fill up Form SG.
- You may also go to "School-based Helpline" if you have any other questions/issues on SLS/HBL.



There is too much information.
Where do I get all the updates?

BPGHS HBL WEBSITE

<http://go.gov.sg/bpghsbl>



Bukit Panjang Govt. High School

Home

For BPians 

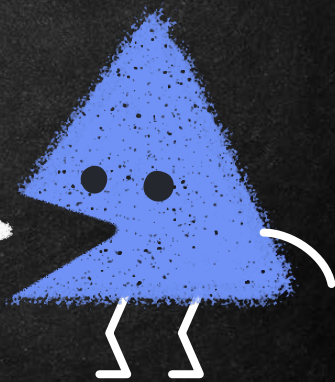
For Parents

HOME-BASED LEARNING @ BPGHS

Dear BPians,

Welcome to the Home-Based Learning website. You will find information for all your respective subjects here.

Any questions?



THANK YOU

