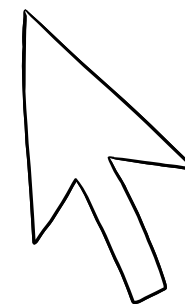
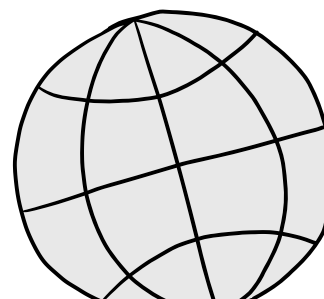


# Sec 1 Year Head Address 2026



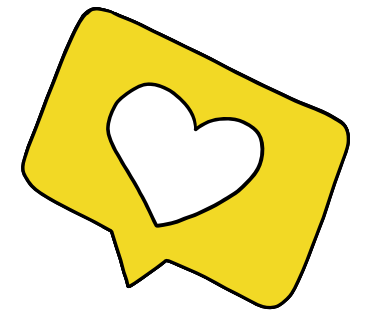
Bukit Panjang Government High School  
武吉班让政府中学



# Hello there!

I'm **Ms Jessie Lee**, the Sec 1 Year Head. Welcome to BPGHS!

You can reach me at me at  
[lee\\_min\\_jessie@moe.edu.sg](mailto:lee_min_jessie@moe.edu.sg)





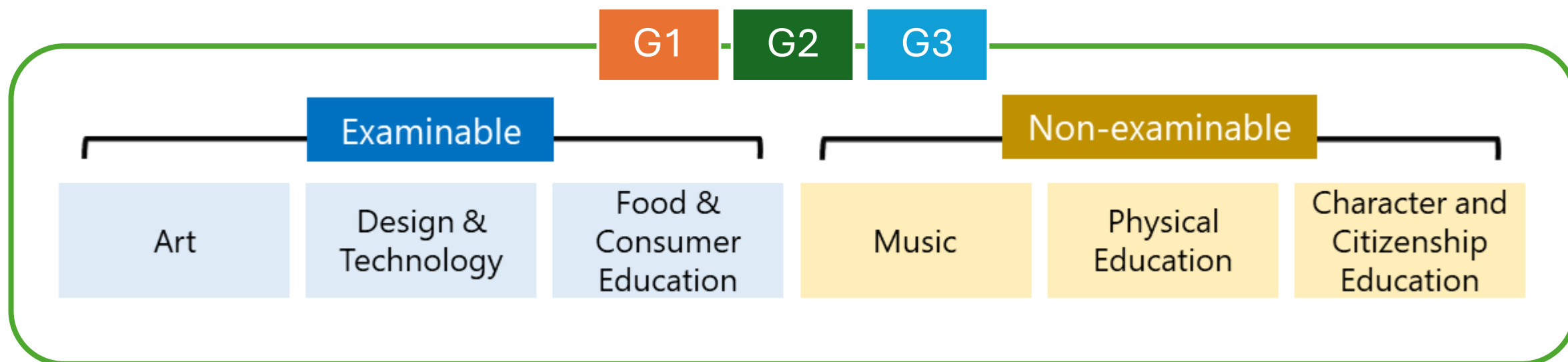
Bukit Panjang Government High School  
武吉班让政府中学

# Full Subject-Based Banding and What it Means for My Child

A briefing for BPGHS S1 Students & Parents 2026

# What you can study at Secondary 1:

## Common Curriculum



Students will take these subjects in their form classes.

# What you can study at Secondary 1:



## Subjects offered at G1, G2 and G3

### G1

- English
- Mother Tongue
- Mathematics
- Science
- Humanities

### G2

- English
- Mother Tongue
- Mathematics
- Science
- History
- Geography
- Literature

### G3

- English
- Mother Tongue / Higher Mother Tongue
- Mathematics
- Science
- History
- Geography
- Literature

Students will be grouped in different classes based on the subject level for each subject.

# For students taking subjects at G1 or G2, you have 2 opportunities to take subjects at a more demanding level.



**At the end of  
Semester 1**

- English
- Mother Tongue
- Mathematics
- Science

Take at more  
demanding  
level in  
**Semester 2**

**At the end of  
Semester 2**

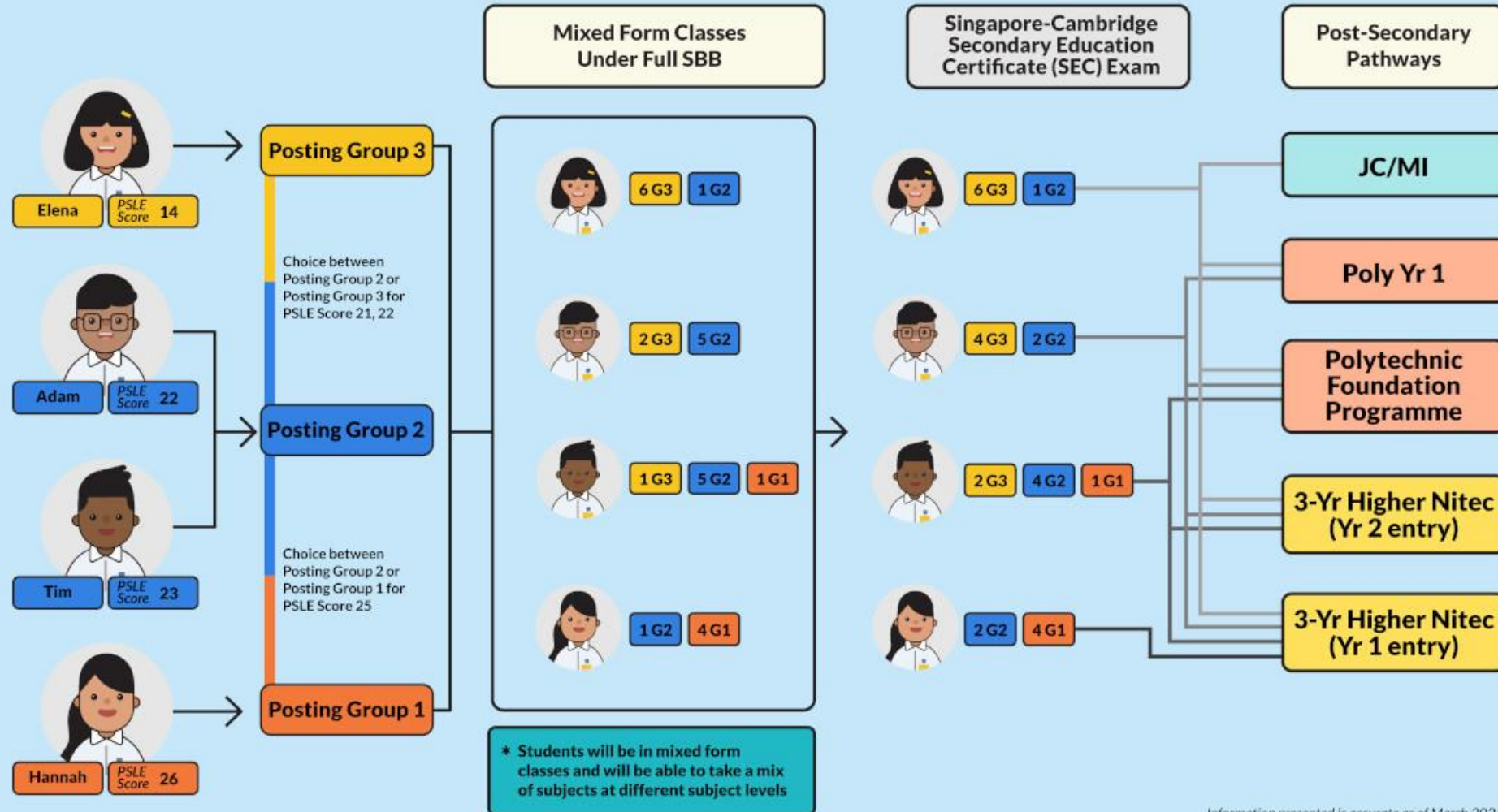
- English
- Mother Tongue
- Mathematics
- Science
- Humanities (History, Geography, Literature)

Take at more  
demanding  
level in  
**Secondary 2**

**Criteria: 75% or higher in the specific subject + Teachers' recommendation**

# Secondary School Experience and Post-Secondary Pathways Under Full SBB

From 2024, you can take subjects at different levels, eg. G1, G2 or G3, which suit your strengths, interests and learning needs. Along the way, your teachers will guide you to make adjustments as needed. At the end of Secondary Four, all students will take the Singapore-Cambridge Secondary Education Certificate examinations. There will be more options for your post-secondary pathways, and many more opportunities to excel in the pathway you choose. The future is yours to make!







# What does FSBB mean for my child?

	Implications
1	<b>More possibilities to pursue interests</b>  Your child can now study the subjects they excel in at a higher level and reach their full potential
2	<b>Greater motivation</b>  With removal of stream-based subject offerings, the possibility of offering subjects at a More-Demanding Level (MDL) is likely to motivate your child to set their aims higher
3	<b>More choices, more pathways</b>  Helping your child to be familiar with the post-secondary options available could serve as motivation for them to work towards their aims



# Assessment Grading

G1 Grades	Mark Range
A	75 & above
B	70 – 74
C	60 – 69
D	50 – 59
E	49 & below

G2 Grades	Mark Range
1	75 & above
2	70 – 74
3	65 – 69
4	60 – 64
5	50 – 59
6	49 & below

G3 Grades	Mark Range
A1	75 & above
A2	70 – 74
B3	65 – 69
B4	60 – 64
C5	55 – 59
C6	50 – 54
D7	45 – 49
E8	40 – 44
9	39 & below



# Assessment Schedule

	Continual Assessment 1	Continual Assessment 2	Semestral Assessment
<b>When?</b>	Term 1 & 2	Term 3	Term 4
<b>What?</b>	Performance tasks, projects, tests, quizzes		End-of-year Exam
<b>How much?</b>	40%		60%

Students who are absent from assessments (e.g. WAs, examination) must produce a **medical certificate** to cover the period of absence.

The MC should contain the **diagnosis** or state that the student is unfit for test/examination.

Please note that letters of excuse (unless circumstances are exceptional e.g. bereavement) and medical notice from Traditional Chinese Medicine practitioners are not accepted.

# School-based Assessments in Sec 1





# Secondary One Form Teachers Team

LIKE

# BPGHS Secondary One Form Teachers Team

Class	Name
1A	Ms Nur Liyana Bte Ali
	Ms Qiu Yiru
1B	Ms Nurlissya Binte Suwandi
	Mr Chong Shuming
1C	Mdm Shirin Binte Shaik Muhyideen
	Ms Chua Pei Ni Richael
1D	Mr Ong Weiquan
	Ms Masrurah Hanim

Class	Name
1E	Mdm Lua Hao Yi
	Mdm Rina Haideati
1F	Ms Chua Bee Ling Pauline
	Mr Mohd Ibrahim Mohd Yoonus
1G	Ms Ana Marie Cardenas Palma
	Ms Anita d/o Chandrasagaran
1H	Mr Mohd Afiq Bin Abdullah
	Ms Chew Sek Ling

# Resources on Full SBB



Bukit Panjang Government High School  
武吉班让政府中学





# Visit the Full SBB Microsite

<https://go.gov.sg/moe-fsbb>



## What is Full SBB?

Full SBB is part of MOE's ongoing efforts to nurture the joy of learning and develop multiple pathways to cater to the different strengths and interests of our students.



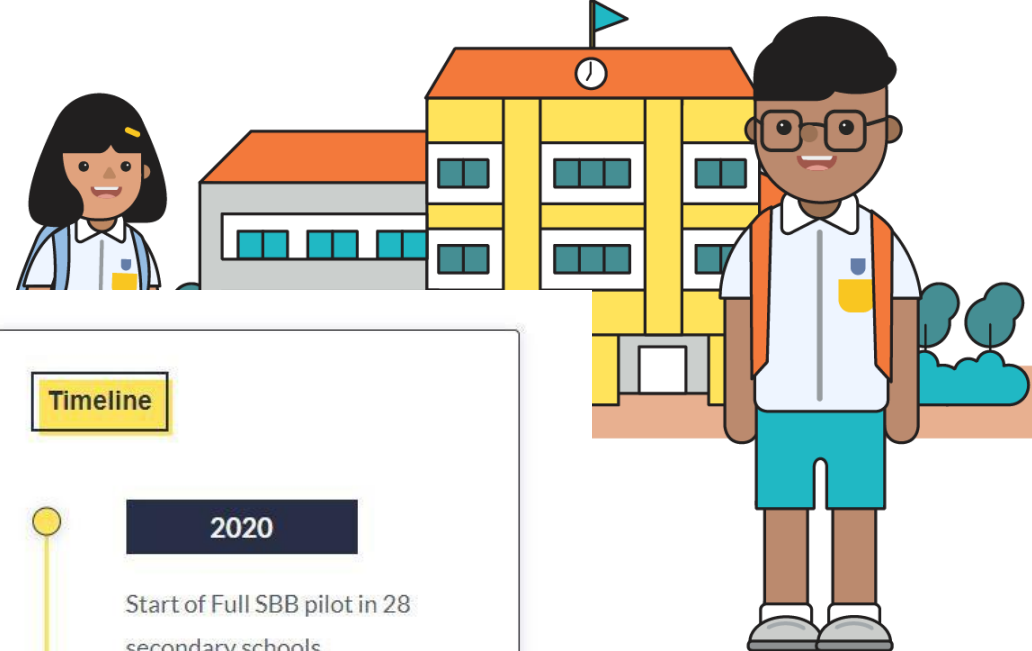
## Secondary school experience under Full SBB

Find out more about Secondary 1 postings, form classes, subject offerings, Common Curriculum and other changes under Full SBB.



## FAQ

Read this list of commonly asked questions and answers on Full SBB.



## Timeline

2020

Start of Full SBB pilot in 28 secondary schools

2021

First cohort of Primary 6 students undergo new PSLE scoring and Secondary 1 (S1) posting system

2022-2024

Progressive roll-out of Full SBB to more secondary schools

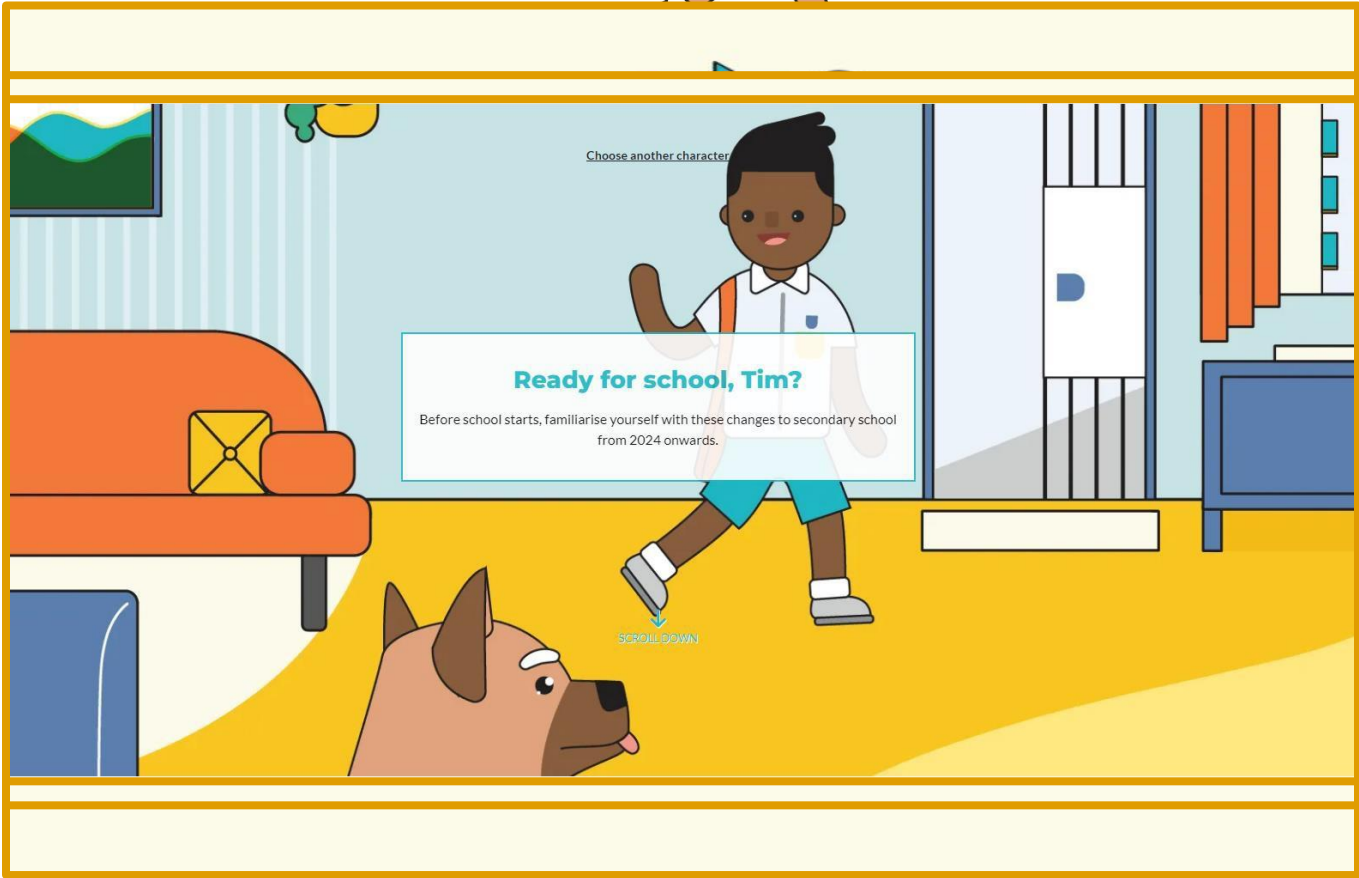
2027



# Interactive Site: Where will your path lead?

<https://go.gov.sg/my-fsbb-path>

Find out each  
student's unique Full  
SBB experience  
through this  
interactive site



# Find out more about Full SBB

## Microsite



<https://go.gov.sg/moe-fsbb>

## Interactive Site



<https://go.gov.sg/my-fsbb-path>

# Find out more about Full SBB

## MOE Explainer Video



<https://go.gov.sg/moe-fsbb-explainer>

## CNA Singapore Tonight Video



<https://go.gov.sg/cna-fsbb>

**Thank you!**